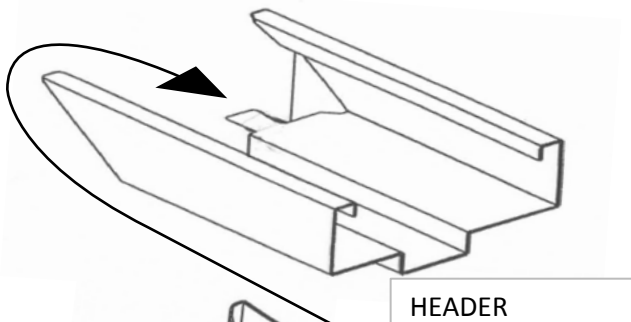
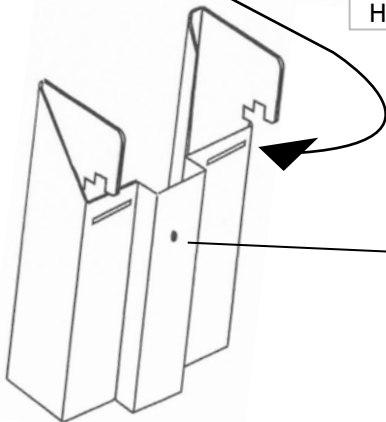


Installation Instructions

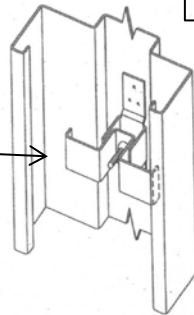


HEADER

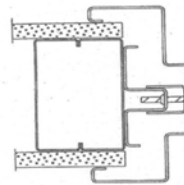
Miter Corners on our KD frames are of a Tab and Slot design. They lock together and should be tightened in place by hand screwdrivers only. (screw guns will strip the screws out) The compression anchor is shown below.



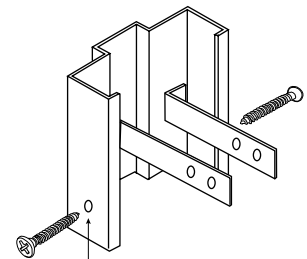
JAMB SECTION



COMPRESSION ANCHOR

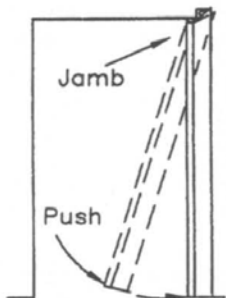


Typical Installation



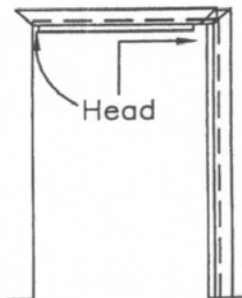
Dimple Hole for screw on face and wood stud base anchor

STEP 1



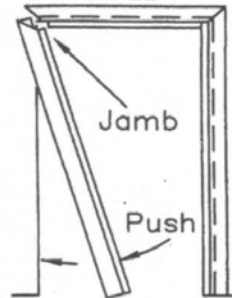
- A. PUSH TOP OF ONE JAMB OVER WALL.
- B. HOLD TOP OF JAMB IN PLACE, THEN PUSH BOTTOM IN TOWARDS AND OVER WALL

STEP 2



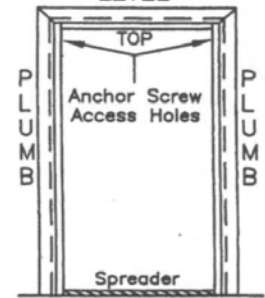
- A. POSITION FRAME HEAD OVER WALL.
- B. ALIGN HEAD TABS WITH FRAME SLOTS AND SLIDE HEADER TOWARDS JAMB TO ENGAGE THE SLOTS.

STEP 3 LEVEL



- A. PUSH TOP OF REMAINING JAMB OVER WALL AND MATE TABS IN SLOTS.
- B. PUSH BOTTOM OF JAMB IN TOWARDS AND OVER WALL.
- C. LEVEL HEADER

STEP 4 LEVEL



- A. ADJUST PLUMB ANCHORS WITH SCREWDRIVER
- B. PLUMB HINGE JAMB AND ANCHOR SILL WITH WOOD STRAPS PROVIDED.
- C. REPEAT WITH STRIKE JAMB